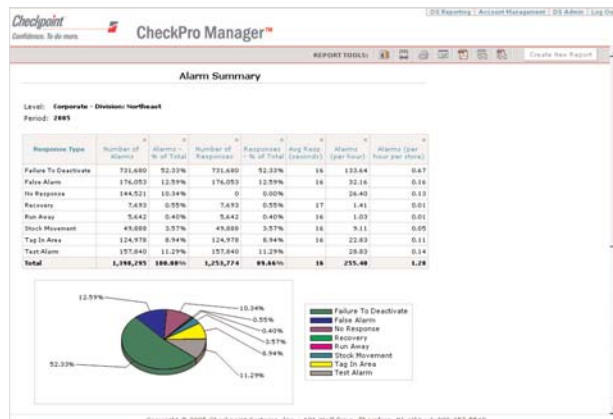


CheckPro Manager™

EAS Data Collection and Reporting



- Automates the EAS activity reporting process
- Web-based reporting
- Easily integrates with existing LP infrastructure
- Eliminates paper-based logs
- Compact, wall-mounted display for easy access



CheckPro Manager™ Data Collection Software

In a retail environment, knowing why an alarm goes off is as important as the alarm itself. Each time an alarm sounds an associate should respond and evaluate the situation; without employee reaction, your LP system is not working to its full capacity.

Our advanced CheckPro Manager loss prevention solution lets you collect, manage and analyze alarm activity data – easily and accurately. In fact, this comprehensive tool set improves store associates' reaction rates, deters customer and employee theft and helps to reduce shrink – all while monitoring alarm compliance.

Capture Data You Can Use

Designed around an intuitive, easy-to-use interface, the CheckPro Manager system is simple to learn and administer. After an alarm condition is triggered and investigated by a sales associate, event details can be quickly entered via predefined response codes into the ATM-style CheckPro Manager data collection unit. Key information such as alarm description, associate response time, disturbance location and SKU level data can be instantly captured. Minimal training for store employees immediately increases operational efficiency and profitability.

Real-time Data Aggregation

Data is conveniently stored in the base unit and then securely transmitted at scheduled intervals to Checkpoint's data center. Data can be easily accessed and manipulated through the Checkpoint reporting website. This flexible, easy-to-use site allows alarm data to be viewed and analyzed through user-friendly reports and graphs. Accurate analysis of your data is quick and easy.

Web-based reporting and user friendly reports make accessing and sorting data quick and easy.

Features:

- Performs electronic EAS alarm data capture
- Provides convenient web-based reporting
- Offers an intuitive user interface
- Provides customizable alarm response codes
- Automates data transmittal

CheckPro Manager™

EAS Data Collection and Reporting

Specifications:

Dimensions

Data Collection Unit: 8"W x 9"L x 4"D
(20.32cm x 22.86cm x 10.16cm)

Power Requirements

110-120 VAC at 50-60 HZ; 3 wire, switched

Mounting Requirements/Guidelines

Flat mounting service approximately 12" square
(77.42 cm square)

Environmental

Operating Temperature: 10°C to 45°C
(50°F to 113°F)
Storage/Operating Humidity: 5% to 90% non-condensing

Secure Data Transmission

Analog phone line
Hardwire or wireless Internet
Configurable data transmission schedules

Optional Components

People counter hardware
Scan gun
Printer assembly
Strobe

System Capabilities:

Data Collection Unit

EAS management
Customizable response codes
Customizable auxiliary data capture
Visual Timer
Activity Review
Service management
People counter integration
Customizable data exchange
CCTV and DVR integration
Service diagnostics
Automatic software updates

Reporting

ASP-based reporting
Web-based access to reports
Microsoft Internet Explorer v5.0 or higher
Netscape Navigator v4.7 or higher
User authentication at log-in
Customizable data reports
Print, email and export to other file formats directly from reporting site
Sort by data range and hierarchical level
Graphic report representation

Administrator

Web-based account administration for EAS Management, Service Management and Customizable Data Capture



Compact, wall-mounted display allows for easy access by in-store personnel or service technicians.



Confidence. To do more.

Checkpoint Systems, Inc.
101 Wolf Drive, P.O. Box 188
Thorofare, NJ 08086

800 257 5540 Toll Free
856 848 1800 Phone
856 848 0937 Fax
www.checkpointsystems.com